

Street Chargertm

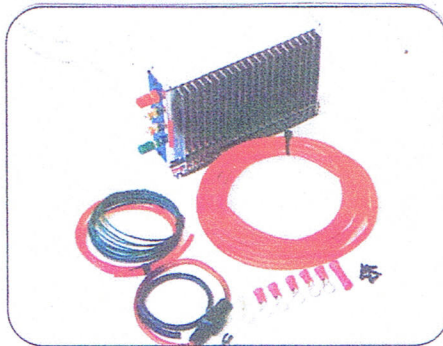
by Woochitronics

Installation Manual

Note: Street Charger is a quality product and should be installed by a professional or someone knowledgeable about electronics or wiring. Treat the Street Charger as you would treat a car audio amplifier. Take care to double check all your connections before operating the unit.

Wiring kit consists of:

- 1' of 8 ga. wire (black) with shielded ring terminal on each end (ground wire)
- 3' of 8 ga. wire (red) with shielded ring terminal on each end (output wire)
- 15' of 18 ga. wire (trigger wire)
- 15' of 8 ga. wire (red) with shielded ring terminal on one end (power wire)
- 8 ga. fuse holder with shielded ring terminal on one end & butt connector on other end
- 50 amp fuse
- 5 self tap screws 1/2"
- 5 wire ties



Tools need for proper installation:

- quality crimp tool
- screw gun
- 7/16 nut driver
- volt/ohm meter

(If you don't have these tools, borrow them from someone who does.)

Woochitronics strongly suggests owning a volt/ohm meter. It will not only be helpful in installing your charger but also in maintaining and trouble shooting your hydraulic system in general.

Always disconnect the ground for your hydraulic batteries before working on your system.

!!! DANGER !!!

DO NOT connect any other wire but the output wire (OUT) to hydraulic battery bank. Ground, power, and trigger cannot be connect to hydraulic battery bank. These must run off your car's electrical system.

***** ALWAYS remember to disconnect the OUTPUT wire of charger at the battery bank before replacing the 30 amp fuse on charger. Failure to do so may cause damage to charger. Be extremely careful not to short fuse against casing.*****

Street Chargertm

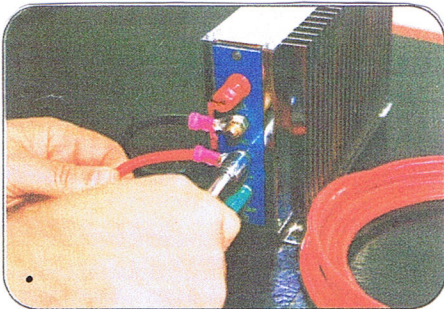
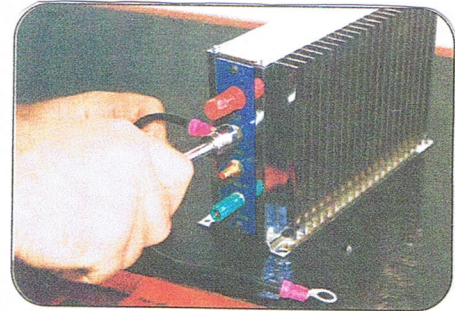
Installation Procedure

Note: Always disconnect the ground for your hydraulic batteries before working on your system.
If you purchased a wiring kit with your Street Charger, skip to step 6.

Step 1:

Assemble ground wire by crimping shielded ring terminals on both ends of 1' of 8 ga. wire.
Connect ground wire to second post (GND).
Hand tighten with 7/16 nut driver

①



②

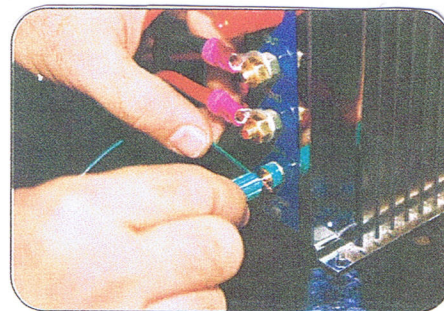
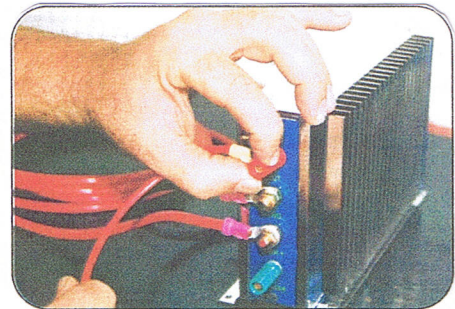
Step 2:

8 ga. power wire needs to be long enough to run from the car engine battery to the trunk. Assemble power wire by crimping shielded ring terminal to one end of 8 ga. wire.
Connect power wire to third post (PWR+).
Hand tighten with 7/16 nut driver.

Step 3:

Assemble output wire by crimping shielded ring terminals to both ends.
Connect output wire to top post (OUT).
Hand tighten with 7/16 nut driver.

③



④

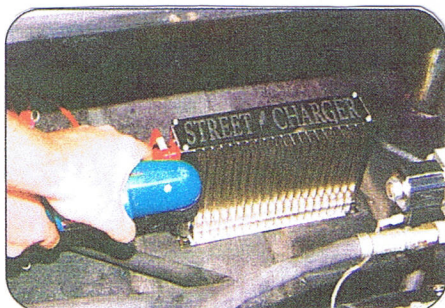
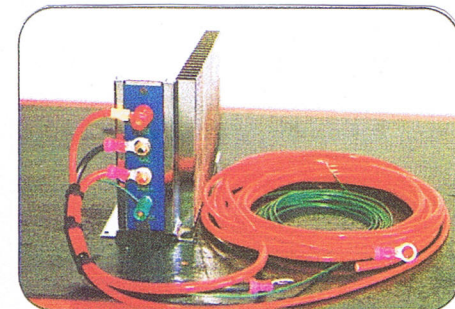
Step 4:

18 ga. trigger wire needs to be long enough to run from car's fuse box to the trunk. Strip 1/4" of 18 ga. wire, loosen green cap on fourth post, insert wire through the small hole in the post. Tighten cap.

Step 5:

Your Street Charger should look like this.
Now it is ready to install.

⑤



⑥

Step 6:

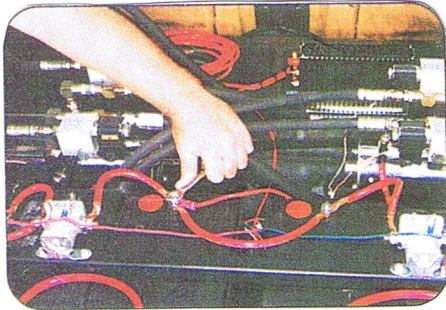
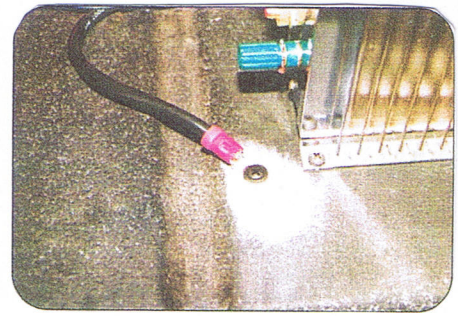
Choose a clean location to mount Street Charger. Avoid areas where dirt or oil settles or where charger may get wet. Do not mount charger under the hood.
Treat your charger like you would treat an audio amplifier. Once you have located your spot, use all 4 self-tap screws and screw gun to mount charger in standing position with Street Charger logo facing up.

Step 7:

Connect ground (GND) (black wire) to the chassis of car using self-tap screw.

DO NOT ground to negative post of hydraulic battery bank. A good ground is extremely important. Make sure to sand the area where the ground is attached to the chassis.

⑦



⑧

Step 8:

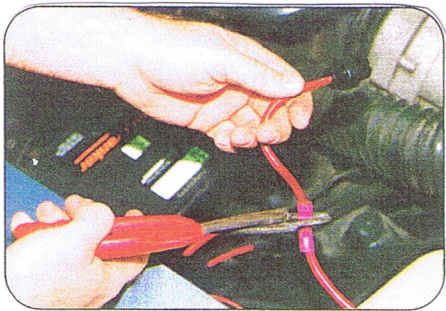
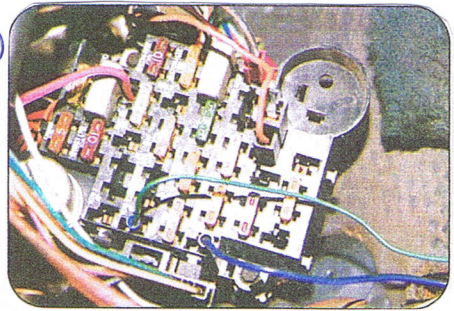
Connect the output wire (OUT) to positive post of the battery that goes to the solenoid. (If you have 2 banks of batteries, for example 4 on each side, you will also need to bridge the two banks together with 4 ga. wire by connecting the positives of the batteries that go to the solenoids.)

At this point, one or more of the high/med/low lights should come on.

Step 9:

Run the 18 ga. trigger wire to the front of the car. Connect wire to a circuit in the fuse box which turns on and off with the ignition.

⑨



⑩

Step 10:

Run the 8 ga. power wire (PWR+) to car's front battery. Trim wire to proper length. Strip 1/4" and crimp to fuse holder's butt connector. Connect fuse holder to car's front battery. (Fuse should be no more than 12 inches from car battery.) This wire will probably spark when first connected. Double check all connections before installing the 40 amp fuse. Reconnect ground for hydraulic batteries.

Step 11:

Use the volt/ohm meter to test all connections. Touch black wire of voltmeter to car chassis to ground.

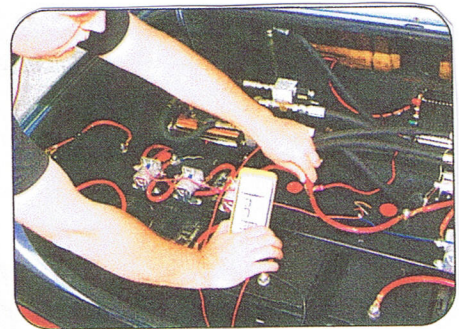
⑪

Test #1:

Touch red wire of voltmeter to PWR+ post on Street Charger. Meter should read 12 - 14 volts.

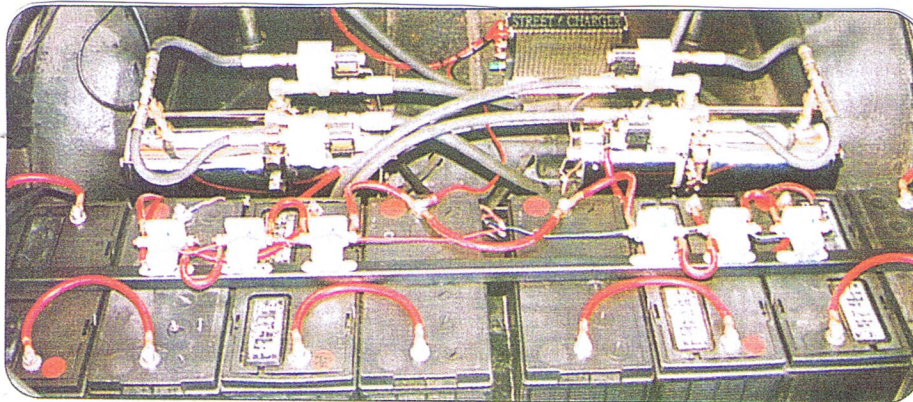
Test #2:

Touch red wire of voltmeter to OUT post on Street Charger. This will show your hydraulic battery level. Start the car. Watch voltmeter for battery level to rise slowly. Green light should be on. One or more of the charge lights should be on. If green light does not come on, check the green binding post (trigger). If not reading 12 - 14 volts, check connection at fuse box.



Step 12:

Congratulations! Now every time you drive your car, you'll be charging your hydraulic batteries. One thing to remember: If you have a ground quick-disconnect, it must be connected for the charger to work. If your batteries are not grounded, then the electricity cannot flow through them.



Specifications:

Input voltage	11 - 14.7 volts
Output voltage	24, 36, 48, 60, or 72 volts battery charging (depending on model)
Efficiency	90% at typical charge level
Input current	40 amps max. for all models
Size	3" wide, 5.5" high, 8.5" long (9.75" with terminals)
Turn-on feature	5 second soft start

Indicators:

Green led / power	Lights when triggered
Red led	Lights when internal protection activated
Amber leds	Monitors battery charge level

Circuit Protection:

Current limiting	Internal circuitry provides constant current
24 volt model	15 amps max output
36 volt model	10 amps max output
48 volt model	7 amps max output
60 volt model	6 amps max output
72 volt model	5 amps max output

Warranty

This product should be free from defects in material and workmanship. Should there be found a defect in components and fabrication of this device, please call 1-888-921-9212 and ask for customer service. Should this device not perform as described in the specifications, and it is installed correctly as determined by a professional installer, call 1-888-921-9212 and ask for tech support.

If it is determined that a defect in material and/or workmanship has been noted and/or has caused a malfunction in the charger, Woochitronics at its discretion will repair or replace the unit for a period of 90 days from date of purchase.

Disclaimer

Since this device is capable of drawing high current, Woochitronics and HLab recommend the use of the fusing as shown on page 2 of this manual. Any damage to vehicle or other equipment can occur as a result of improper wiring and application. Therefore, Woochitronics and HLab will not assume responsibility for any damage to any person, property, vehicle, equipment, or otherwise.